

## STANDARD FIBER LASER MARKING MACHINE

# ZCGX-DTW1



### SUMMARY INFORMATION:

1. LASER MARKING MACHINE ON PROMOTION, HIGH COST PERFORMANCE.
2. FIBER LASER GENERATOR ,LOW CONSUMPTION, EASY FOR MAINTAIN.
3. COMPACT DESIGN, 840MM×620MM×1610MM
4. OPTIONAL LENS FOR DIFFERENT MARKING AREA

### APPLICATION:

- 1.VARIOUS METAL MATERIALS, PART OF NON-METAL MATERIALS.
- 2.THE FIBER OPTIC LASER OSCILLATOR MARKER HAS ADVANTAGE OF HIGH BEAM QUALITY AND HIGH RELIABILITY. IT IS SUITABLE FOR PROCESSING FIELDS THAT NEED HIGH MARKING DEPTH, SMOOTHNESS AND ACCURACY.

- ELECTRONIC COMPONENTS INDUSTRY
- IC CARD INDUSTRY
- MEDICAL DEVICE INDUSTRY
- PLASTIC TOOL INDUSTRY
- GLASSES, WATCH AND CLOCK
- KITCHEN AND BATHROOM APPLIANCE

### SPECIFICATION:

MACHINE MODEL	ZCGX-DTW1
LASER	RAYCUS
WAVELENGTH LENS	F-THETA WAVELENGTH LENS
SOFTWARE	EZCAD
BOARD	BEIJING JCZ MAIN BOARD
GALVO	SINO-GALVO SCANNER HEAD
LASER WAVELENGTH	1064NM
LASER POWER	20W 30W 50W FOR CHOICE
REPETITION FREQUENCY	0-100KHZ
MINIMUM LINE WIDTH	0.012MM
MARKING RANGE	100MM*100MM-300MM*300MM
MARKING DEPTH	≤0.4MM(BY MATERIALS)
MARKING SPEED	≤1000MM/S
REPEATABILITY	±0.001MM
POWER SUPPLY REQUIREMENT	110V/220V/SINGLE-PHASE/50HZ/3A
TOTAL POWER	500W (POVER SAVING)
COOLING METHOD	BUILT IN AIR COOLING
FILE FORMAT	ALL FONT/FONT OF WINDOWS OPERATING SYSTEM FONT LIBRARY
OPERATING SYSTEM	WINDOWS LATEST SYSTEM/XP/2000/ 98 SYSTEM
COMPUTER	YES
RED LASER TARGET	YES



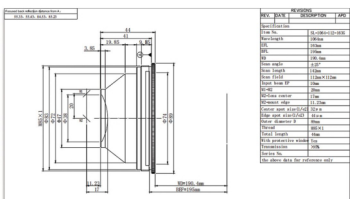
### MACHINE DIMENSIONS

- ▶ LENGTH:80cm
- ▶ WIDTH:65cm
- ▶ HEIGHT:144cm

### CONFIGURATION PRESENTATION:



### RAYCUS LASER SOURCE



### FIELD LENS



### EZCAD SOFTWARE



### BJJ CZ MAIN BOARD



### SINO-GALVO

## SAMPLES:

